

Island Living Collection



SPECTRUM HOMES
— CHOOSE LIVING —

The Portsmouth

4 Bed | 3 Living | 3 Bath | Alfresco | 2 Car
Total area: 296.90m² (31.95 squares)

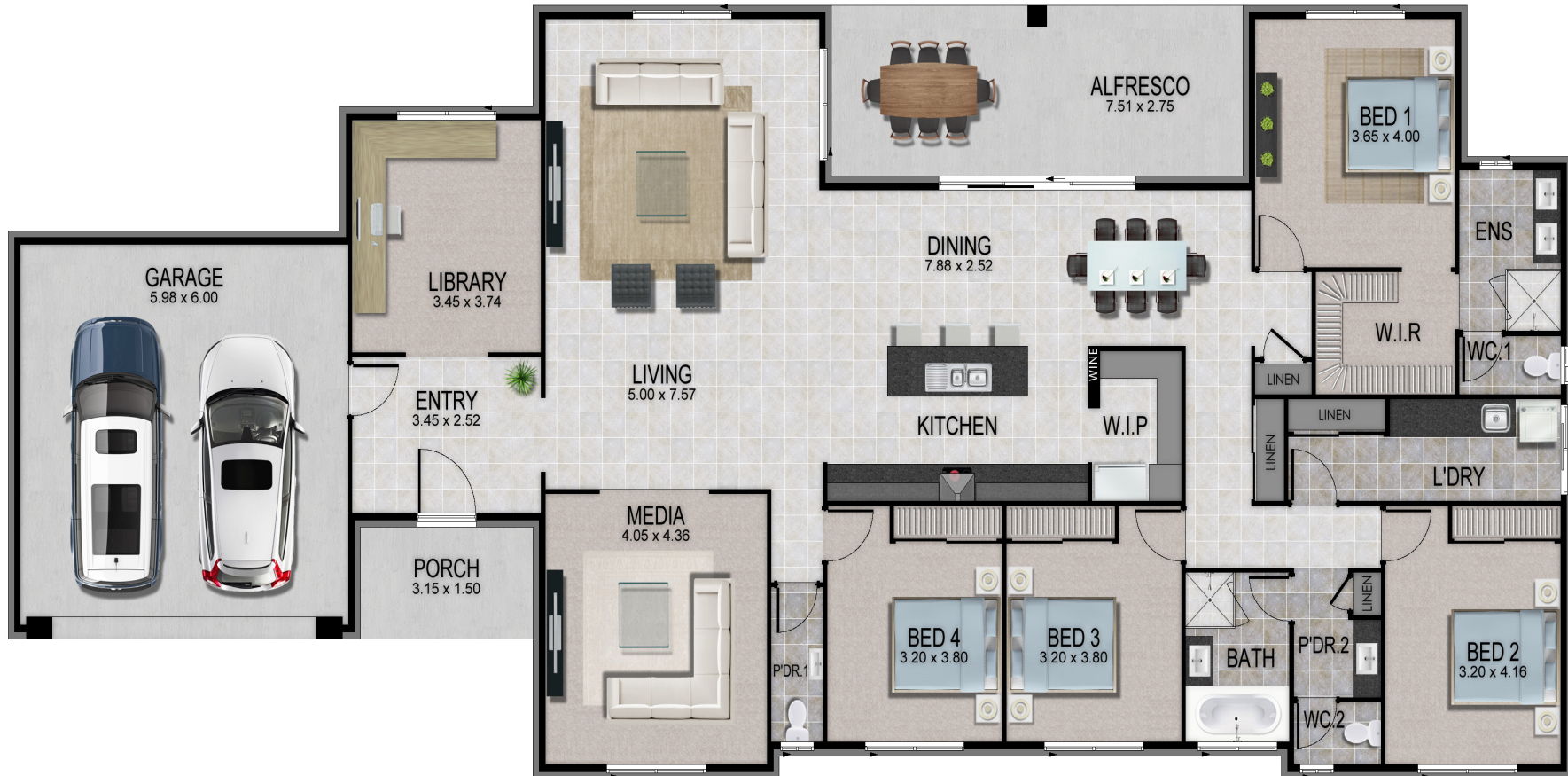


@spectrumhomesaus

| www.spectrumhomes.com.au

The Portsmouth

31m+ wide lots



House (width x length): 12.4m x 28.5m

Floor Area:

Living	230.35 m ²
Garage	41.15 m ²
Alfresco	20.65 m ²
Portico	4.75 m ²
Total	(31.95 squares) 296.90m²



SPECTRUM HOMES
— CHOOSE LIVING —

This work is exclusively owned by Spectrum Homes Qld Pty Ltd and cannot be copied, either wholly or in part without the written permission of Spectrum Homes Qld Pty Ltd. This document is for illustration purposes and should be used as a guide only. Refer to actual working drawing.